



## Innovative Glass Solutions (PTY) Ltd

Vat No: 4940314315 Reg no: 2023/694005/07  
P.O. Box 1160 2 Lismore Avenue  
Plettenberg Bay Plettenberg Bay  
6600 6600

[www.igsplett.co.za](http://www.igsplett.co.za)

Office Landline: 0875503098

Cell/WhatsApp: 0711023748

Email: [office@igsplett.co.za](mailto:office@igsplett.co.za)

### Privacy & Glass Options

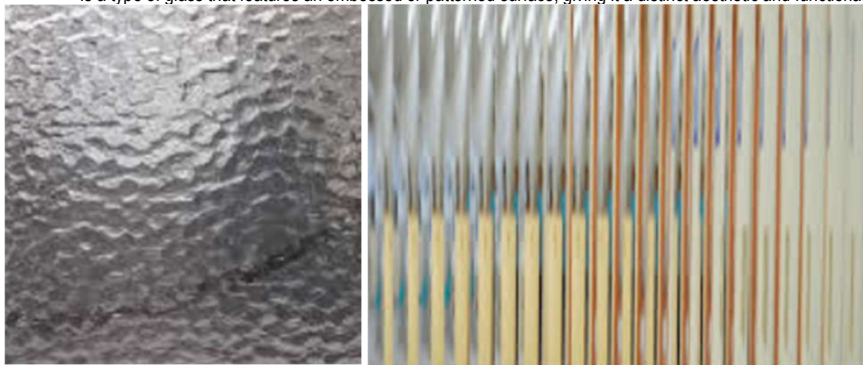
#### Obscure Glass

Refers to glass with reduced transparency, designed to distort or obscure views while still allowing light to pass through. It's a type of glass that provides privacy without completely blocking out light, commonly used in bathrooms, entryways, and other areas where privacy is desired.



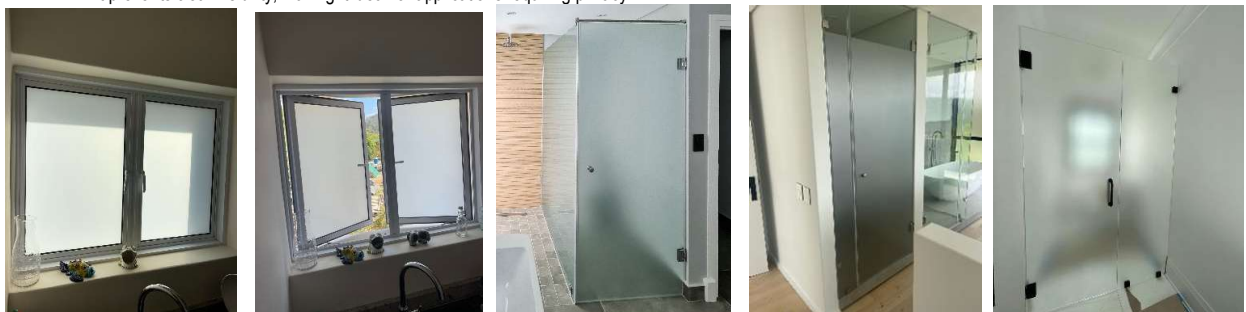
#### Textured / Pattern Glass

Is a type of glass that features an embossed or patterned surface, giving it a distinct aesthetic and functional appeal.



#### Frosted Glass

This is a type of glass that has been treated to create a translucent surface, meaning it diffuses light while obscuring vision. This is typically achieved through techniques like sandblasting or acid etching, which create a textured, opaque appearance. This allows light to pass through, it prevents clear visibility, making it ideal for applications requiring privacy.





# Innovative Glass Solutions (PTY) Ltd

Vat No: 4940314315 Reg no: 2023/694005/07  
P.O. Box 1160 2 Lismore Avenue  
Plettenberg Bay Plettenberg Bay  
6600 6600

[www.igsplett.co.za](http://www.igsplett.co.za)

Office Landline: 0875503098

Cell/WhatsApp: 0711023748

Email: [office@igsplett.co.za](mailto:office@igsplett.co.za)

## Vinyl Film

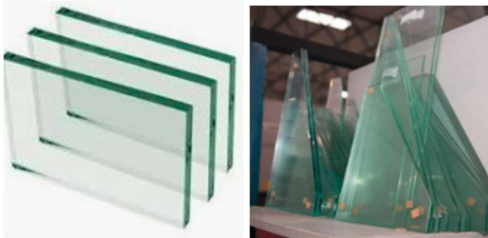
Vinyl film is a self-adhesive material applied to glass surfaces to create a frosted or etched appearance. This technique is used for decorative purposes, privacy, or to add safety features to glass.



## Glass Types

### Clear Float Glass

Float glass is a distortion-free glass produced in a wide range of sizes and thicknesses. This Glass is not as strong as toughened glass and tends to break into sharp shards when broken.



### Toughened Glass

Toughened glass, also known as tempered glass, is a type of safety glass that has been treated to be significantly stronger than regular glass. It is up to five times stronger than ordinary glass and designed to shatter into small, relatively harmless granules rather than sharp shards when broken.



### What is the difference between clear float glass and toughened glass?

Toughened Glass is up to 5 times stronger than Float Glass. If broken, Toughened Glass breaks into small granular pieces instead of large chunks that is characteristic of float glass.



### Double Glazing

Is where two panes of glass are separated by a layer of air and are used in a home's windows & doors, designed to reduce loss of heat and exclude noise.



## Innovative Glass Solutions (PTY) Ltd

Vat No: 4940314315 Reg no: 2023/694005/07  
P.O. Box 1160 2 Lismore Avenue  
Plettenberg Bay Plettenberg Bay  
6600 6600

[www.igsplett.co.za](http://www.igsplett.co.za)

Office Landline: 0875503098

Cell/WhatsApp: 0711023748

Email: [office@igsplett.co.za](mailto:office@igsplett.co.za)

### Tinted laminated Safety Glass

This glass is constructed from more than one pieces of glass which are bonded together with interlayers to form a permanent bond. The interlayers work to support and hold the glass to create a strong, uniformed layer even when broken. This glass is an effective sound control product. Helps prevent harmful effects of UV radiation and creates comfortable conditions by reducing hard effects of glare and solar radiation.

Options include Clear Laminated, Tinted Laminated, Acoustic Laminated and Performance Laminated Glass

### Performance Laminated

- **Solar Vue**  
Provides medium solar control and neutral, low reflective appearance. Eliminates solar heat, transmits visible light and eliminates damaging UV radiation.
- **Solar Shield**  
Reduces solar heat, limits the amount of light entering the interior and blocks up to 99% damaging UV Radiation
- **Low E Glass or Low-Emissivity Glass**  
Is a type of window glass that has a microscopically thin coating that reflects heat, helping to regulate temperature in a building. Minimizes the amount of infrared and ultraviolet light without minimizing the light that enters your home

### Regular Cleaning:

A recommended cleaning process for glass involves starting with a pre-rinse to remove loose dirt and debris, followed by applying a cleaning solution, scrubbing with a non-abrasive applicator, rinsing thoroughly, and finally drying with a lint-free cloth or squeegee.

Avoid cleaning in direct sunlight to prevent streaking. with warm, soapy water. Avoid abrasive acidic cleaners and harsh solvents.

When we receive payment to produce any of the products, we take it that you have read and understood and agreed to all the terms and conditions regarding the sale, including the documents for the care / maintenance of the product. That you have considered the long-term maintenance being a regular requirement to keep within the guarantees of the products purchased and /or installed.

All available online for your attention <https://www.igsplett.co.za/igs-terms-conditions.html>

I, \_\_\_\_\_ (full name) hereby  
accept the above T&C's.

Signed: \_\_\_\_\_ Date: \_\_\_\_\_